



Optometrists & Opticians Board

16 College Road, #01-01 College of Medicine Building, Singapore 169854
Tel: 6355 2533 Website: www.oob.gov.sg Email: OOB@spb.gov.sg

DELEGATION OF CONTACT LENS DELIVERY (COVID-19 INTERIM MEASURE)

Issuance date: 13 April 2020

(Amended 15 April 2020, paragraph 5.1(a))

Purpose

1 The COVID-19 situation has affected businesses across all sectors, including the optical business. In response to government's heightened measures to reduce movement, the public is expected to stay home and only go out if necessary, eg. for urgent medical needs.

2 To help patients receive contact lenses (CL) from their optometrists and opticians qualified for contact lens practice, the Optometrists and Opticians Board will be implementing an interim measure from 13 April 2020 onwards to allow optometrists/ qualified opticians (contact lens practice) registered (hereby defined as "qualified CL practitioners") in Singapore to deliver contact lens to patients' homes by registered parcels/ couriers during the COVID period, until further notice is issued by the Board.

3 Such delegation would allow consumers to replenish their CL supplies safely and legally from known local optical shops instead of unknown sources.

Relevant regulation

4 Notwithstanding the current legal restriction against unqualified persons from delivering Contact Lens (CL) to end-users, the Board may issue a directive with a specified timeframe to enable qualified CL practitioners to delegate such delivery to couriers. Practitioners are expected to comply with the directive pursuant to Regulation 7¹ of the Optometrists and Opticians Regulations (Practice, Conduct, Ethics and Publicity) Regulations.

Directives by the Board

5 The Board may allow delegation of CL delivery if the following conditions are met:

5.1 Delegation by registered practitioners

- a. Only **fully registered** Optometrists/ qualified opticians (contact lens practice) in Singapore with physical place of practice are allowed to delegate delivery of CL to patients' homes by registered parcels / couriers during the COVID period.
- b. To be eligible, practitioners must have fixed employment at a local physical optical shop or licensed healthcare institution . This is to ensure that end-users can return to their principal optical shop which sold the CL for after-sale services if needed.

¹ *Supply of optical appliances*

7. A registered person shall not supply optical appliances which do not comply with the standards determined in the guidelines or directives issued by the Board.

- c. Practitioners who are delegating the CL delivery shall submit their full name, OOB registration number and place of practice via online form at <https://go.gov.sg/cl-delegation> to the Board before approval is given.

5.2 *Safeguards for Patients*

- a. The practitioner shall continue to abide by the [Professional Practice Guidelines \(PPG\)](#) (*Article 4 for Optometrists; Article 5 for Opticians (CLP)*) on Contact Lens Practice including:
 - i. Ensure the patient has a recent eye examination within the recommended frequency
 - ii. Ensure that the patient can safely repeat CL purchase without further examination
 - iii. Ensure that the necessary aftercare is properly carried out.
- b. Practitioner shall verify the appropriateness of dispensing CL using such means in accordance with the general PPG.
- c. This interim measure is not applicable to first-time/new contact lens wearer.
- d. It is also not applicable to wearers who require more frequent eye examinations before contact lenses are prescribed and dispensed, e.g. patients with fast progressing myopia, fluctuating refractive errors, or who are under close monitoring for any cornea/conjunctival conditions.

5.3 *Accountability*

Practitioners who delegate shall be:

- a. Accountable for the whole supply process from the point of delegation to receipt of the CLs by the end-user.
- b. Responsible for putting in place all necessary measures to ensure that the CLs are delivered to the registered end-users.
- c. Keep relevant and proper records and the whole process for tracing purposes. The record must be presented to the Board upon request should any malfeasance arise that requires investigation.

- 6 Please see **Annex 1** for an illustrative workflow for ease of reference.

- END-

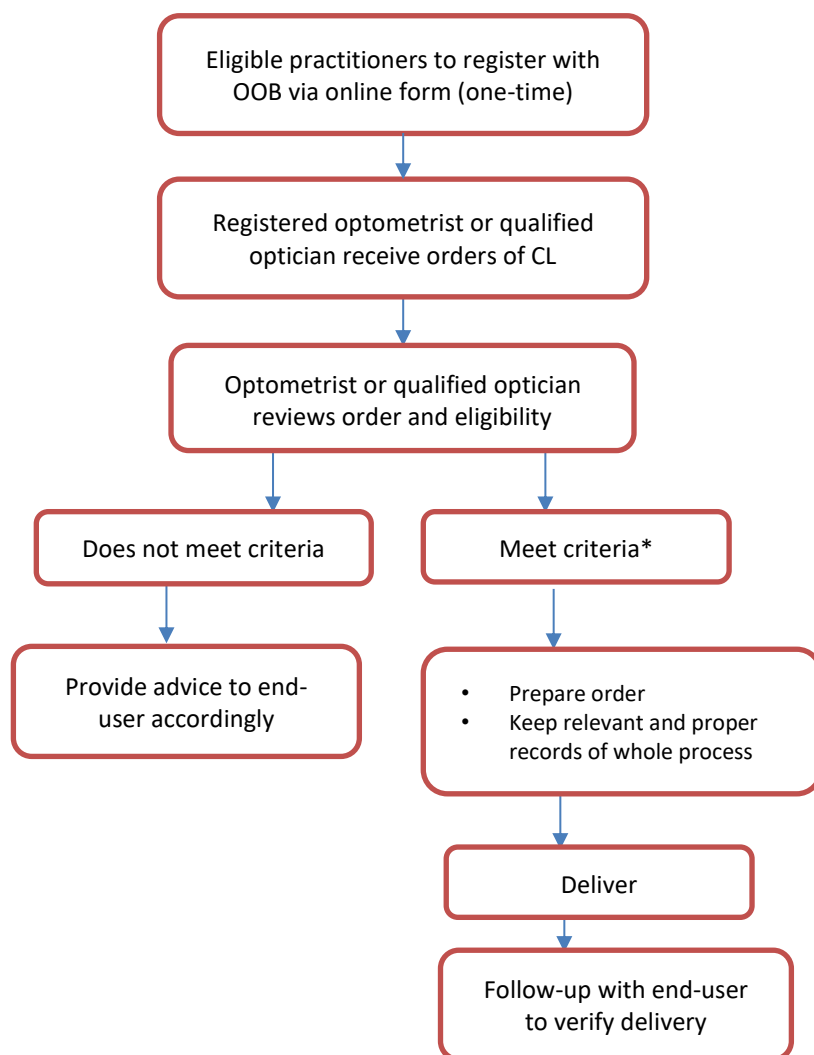
Annex 1

Delegation of CL delivery

Only Optometrists or Opticians (CLP) with valid registration and place of practice are allowed to delegate the delivery of contact lens to patients.

Practitioners who are delegating the CL delivery shall submit their full name, OOB registration number and place of practice via online form at <https://go.gov.sg/cl-delegation> to the Board before approval is given.

Work Process for Optometrist or Qualified Optician



* Criteria – Refer to Para 5